

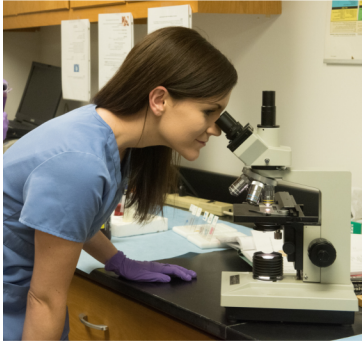
PATHOLOGISTS' ASSISTANT

MASTER OF SCIENCE DEGREE



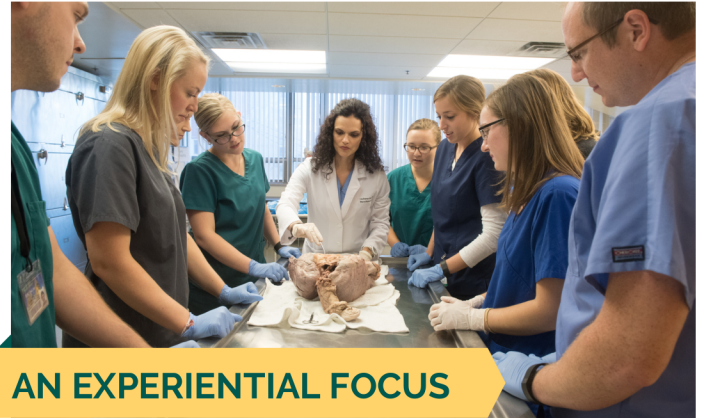
WAYNE STATE
Eugene Applebaum College of
Pharmacy and Health Sciences

BEHIND-THE-SCENES PATIENT CARE



Pathologists' assistants play a key role in helping doctors make diagnoses. Their work can be surgical or forensic, and they are responsible for gross examination and dissection of anatomic pathology specimens, postmortem examinations,

laboratory management, and instruction. Ideal PAs have the ability to relate to people, the capacity for calm and reasoned judgment, and a demonstrated commitment to quality patient care.



AN EXPERIENTIAL FOCUS

The Wayne State pathologists' assistant master's degree program begins in May (spring/summer semester) and runs for 24 months.

Students spend the fully didactic **first year** doing comprehensive coursework in anatomy, pathology, histotechnology and more, with extensive laboratory exposure in grossing methodology, histochemistry and autopsy techniques.

The **second year** is dedicated to full-time clinical rotations, with no breaks between semesters.

To ensure a comprehensive breadth and depth of first-hand experiential learning, **students rotate through a broad spectrum of clinical environments** in Michigan and out of state, including:

- Detroit Medical Center
- John D. Dingell VA Medical Center, Detroit
- Ascension Providence Rochester
- Henry Ford Health, Jackson
- Michigan Medicine – University of Michigan
- Bronson Methodist Hospital
- Sparrow Health System
- Oregon Health & Science University Hospitals
- Memorial Health Center Hospital, Illinois
- Wayne County Medical Examiner's Office
- Opus Pathology, TN



100% of our students are employed within 6 months of earning their degree. They are working all over the country.

1 of 12
accredited
programs
in the U.S.



Highly competitive admissions with 100+ applications for 12-16 spots each year

\$100K+
average annual
base salary for
pathologists'
assistants in the
United States

INSPIRED BY DISCOVERY

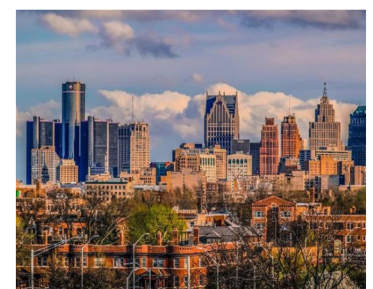


"As a child, simple curiosity led to an early love of anatomy. I enjoyed dissecting and being able to see the structures of various organs, which deepened my understanding of how they function together in the human body. Upon discovering this career field, I knew it would satiate that inner curiosity."

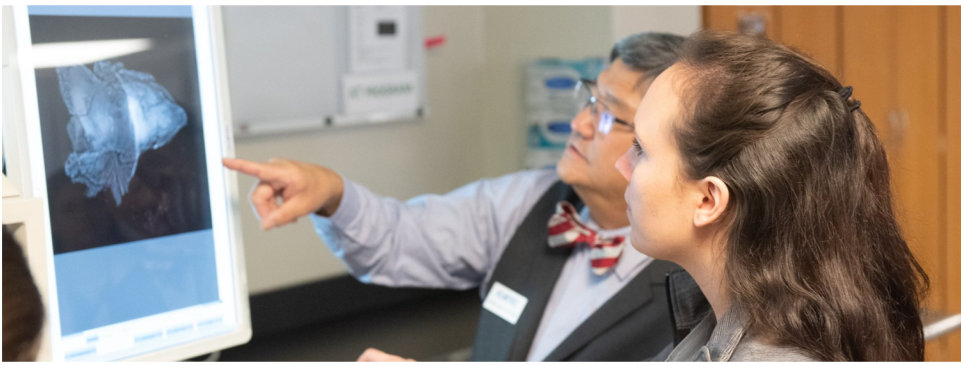
Dejanae Dilworth, Class of 2020

An anchor in urban health care

As one of the founding colleges of Wayne State University, the Eugene Applebaum College of Pharmacy and Health Sciences is built on 100 years of tradition and innovation in the heart of Detroit. We have grown deep roots in our city, harnessing its powerhouse hospital systems and community service organizations as vibrant, real-world training grounds for our students. And our research at all levels – from undergraduates to veteran faculty members – translates into creative solutions for healthier communities.



CPHS.WAYNE.EDU/PAA



Surgical pathologists' assistants make up 98% of the workforce. They handle a variety of specimens that are removed during a scheduled surgery or after a traumatic event. Their job entails accessioning specimens, describing gross appearance of specimens, preparing tissues for microscopy, and performing special procedures including x-ray imaging, frozen sections and tumor triage.

Forensic pathologists' assistants perform postmortem examinations on all medicolegal deaths.

SELECTED PATHOLOGISTS' ASSISTANT COURSES

Medical Photography and Techniques in Pathology: Theory of the behavior of light and selection of appropriate lenses; principles of exposure, color, and filters; macro- and microphotography. Adjustment of clinical photographs and student photographs corrected by Adobe Photoshop Professional.

Medical Microbiology for Technical Professionals: Infectious diseases affecting major organ systems of the body encountered by the pathologists' assistant. Clinical case study analysis.

Human Embryology and Pediatric Pathology: Embryological basis of pediatric and childhood diseases along with adult presentations. Human embryological correlations to clinical settings: case study analysis specific to the pathologists' assistant and clinical evaluation of pediatric pathology. Recognition of anatomical presentations with embryological development in normal and diseased states.

Histochemistry: Study of techniques specific to the Pathologists' Assistant involved in the preparation of tissues prior to microscopic examination and processing inclusive of embedding, sectioning, preparing frozen sections and performing routine and special stain on various tissues.

Autopsy Techniques and Forensic Pathology: Comprehensive review of general and specialized techniques for performing postmortem examinations in both the hospital and medical examiner settings with emphasis on the external examination, evisceration, and block dissection of the adult, perinatal, and pediatric decedent.

TUITION

The total cost of the two-year program for Michigan residents was \$68,051 in the 2021-22 academic year. The Pathologists' Assistant program will be participating in a tuition pilot program. All non-resident students will pay 1.3 times the resident tuition rate effective Fall 2022 semester.

LEARN MORE

Information meetings for prospective students are held on Zoom on the first Tuesday of each month at 6 p.m. Register to attend at cphs.wayne.edu/info.

SUPPORT FOR SUCCESS



Adam Hulscher '21
Beaumont Health,
MI

"PA students at Wayne State can depend on teamwork, collaboration and support from like-minded colleagues, as well as faculty and a director who will move mountains to aid their success. As students, we all understand that we are in this journey together, dispelling any need for competition."

DETROIT LIFE



Anosha Spanta '14
M Health Fairview
Ridges Hospital,
MN

"Detroit is a unique city full of adventure and life. I enjoyed studying in Detroit because you can establish a solid balance between studies and fun. There is so much to do and explore that no two post-exam weekends can be the same."

READY FOR THE REAL WORLD



Curtis Ten Cate '17
VA Ann Arbor
Healthcare System

"The variety and number of clinical sites in the Wayne State program truly equipped me to work anywhere. Not only was I exposed to different essential skills and techniques, but also different doctors, PAs, lab staff, equipment and systems, and all in different environments. This made the next step – going to work – a smooth transition."

CONTACT US

An Academic Services Officer can answer any questions you may have and help guide you through the application process.

cphsinfo@wayne.edu
313-577-1716

Accredited by the
**NATIONAL ACCREDITING
AGENCY FOR CLINICAL
LABORATORY SCIENCES**

naacls.org

Application
deadline

JANUARY 15

wayne.edu/apply



WAYNE STATE

Eugene Applebaum College of
Pharmacy and Health Sciences



[CPHS.WAYNE.EDU/PAA](https://cphs.wayne.edu/paa)