



WAYNE STATE
Eugene Applebaum
College of Pharmacy
and Health Sciences

•imagine •transform •arrive



RADIATION THERAPY TECHNOLOGY BACHELOR OF SCIENCE

Imagine being a member of a coalition of researchers, educators, and practitioners from many professions who work together to improve human health. We transform students into highly skilled health care practitioners who advance the health and well-being of society. Through research, we discover, evaluate, and implement new knowledge to improve models and methods of practice in pharmacy and health sciences from the urban to global levels. Arrive at your health career destination by accepting our invitation to explore the programs of the Eugene Applebaum College of Pharmacy and Health Sciences.

imagine

WHAT DOES A RADIATION THERAPIST DO?

Radiation therapists have a unique opportunity to blend the knowledge and skills of mathematics, science, and psychology in daily work. Radiation therapists operate sophisticated radiation equipment to treat cancerous tissue to the physician's prescription. They assist in designing the patient's treatment through the use of computer produced calculations in three-dimensional space. They recognize when a patient is having additional medical problems, which require a doctor's attention, and provide psychological support for patients who are dealing with the stress of their illness.

The following organization can provide further information about a career as a Radiation Therapist:

- American Society of Radiologic Technologists (ASRT)
<http://www.asrt.org>

WHY STUDY RADIATION THERAPY TECHNOLOGY?

"The greatest strength of the program is the clinical component. WSU is affiliated with many local hospitals, which allow students to work with different clinical instructors and equipment, performing a variety of procedures. Students learn to become adaptable to any hospital environment."

- ASHLEIGH WEYH
Radiation Therapy Technology Alumna

transform

WHY WAYNE STATE UNIVERSITY?

Wayne State University is a premier urban research institution offering more than 340 academic programs through 13 schools and colleges to nearly 28,000 graduate and undergraduate students. The University provides a multidisciplinary approach to research and education, and collaborates closely with government, industry and other institutions on a range of programs.

The Eugene Applebaum College of Pharmacy and Health Sciences (EACPHS) is located on one of the largest academic medical campuses in the United States and puts you in close proximity to the nation's leading health care educators. A degree from the College puts you in good company, with more than 12,000 EACPHS-educated health care professionals working in Michigan.

The Wayne State University Radiation Therapy Technology program is one of the first accredited baccalaureate degree programs in the United States. A small class size enables faculty and clinical instructors to give students more personal attention. The program is known for its academic standards, excellent clinical education component, and comprehensive curriculum.

HOW DO I APPLY?

The application deadline is **November 30** of each year. The applicant must successfully complete all admission requirements, including the program application and all supplemental materials. Program admission is competitive and completion of admission requirements does not guarantee an interview or admission into the program.

arrive

ADMISSION REQUIREMENTS

- A minimum of 2.5 overall GPA, as well as a minimum 2.0 science and non-science prerequisite cumulative GPA.
- All grades in prerequisite courses must be a minimum of a "C" or better (2.0 on a 4.0 scale).
- Attendance at a College Information Meeting is strongly recommended: <http://cphs.wayne.edu/meetings.php>. If you are an out of state applicant, please contact a member of the Radiation Therapy Technology faculty for options.
- Complete two clinical visits at affiliated radiation therapy facilities. If you are an out of state applicant, please contact a member of the program faculty for options to accommodate your circumstances.
- Complete pre-professional courses by end of winter semester before start of the professional program.

SCIENCE AND MATH PREREQUISITE COURSEWORK

BIO 1500 - Basic Life Diversity & Lab

BIO 1510 - Basic Life Mechanisms & Lab (NSIL)

BIO 2870 - Anatomy & Physiology & Lab

CHM 1020 - Survey of General Chemistry & Lab (NSIL)

MAT 1800 - Elementary Functions (QE)

PHY 2130 & 2131 - General Physics I & Lab (NSIL)

PHY 2140 & 2141 - General Physics II & Lab

All science requirements must be completed within six years of the time of admission to the professional program.

NON-SCIENCE PREREQUISITE COURSEWORK

ENG 1020 - Introductory College Writing (BC)

ENG 3010 - Intermediate Writing (IC)

PSY 1010 or 1020 - Introductory Psychology (NSI)

PSY 2300 - Psychology of Everyday Living
(alternatives: PSY 2410 or PSY 2400)

PS 1010 - American Government (CIV or SI)

COM 1010 - Oral Communication (OC) (course required)

PHI 1050 Critical Thinking*

* Degree requirements that may be satisfied by coursework or examination. See www.testing.wayne.edu.

Students who hold a previous bachelor's degree or who qualify under the university's MTA transfer policy (see www.transfercredit.wayne.edu) are exempt from completing the requirements listed below.

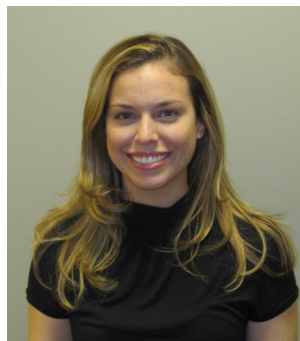
UNIVERSITY GENERAL EDUCATION/DEGREE REQUIREMENTS

Cultural Inquiry (CI)

Diversity, Equity, and Inclusion (DEI)

Global Learning (GL)

Social Inquiry (SI) or Civic Literacy (CIV), whichever not covered by PS 1010 above



Ashleigh Weyh found the transition from the Radiation Therapy Technology program to the professional field a smooth one due to the clinical component of the program. "Almost all of the clinical hours are spent performing the day to day activities of a professional radiation therapist." She

found the WSU faculty to be extremely knowledgeable and excellent instructors who went above and beyond to assist students. Currently a Medical Dosimetrist at the Barbara Ann Karmanos Cancer Institute in Detroit, she works with Radiation Oncologists to design and calculate radiation treatment plans. The work is "very rewarding," allowing Weyh to help patients in need while applying her science background.

GENERAL DEADLINES FOR ADMISSION

APPLICATION DEADLINE: November 30

PROGRAM APPLICATION

<http://cphs.wayne.edu/radiation-therapy/apply.php>

UNDERGRADUATE APPLICATION

<http://wayne.edu/admissions/>

Office of Admissions

Welcome Center

42 W. Warren

Detroit, MI 48202

877-WSU-INFO or 313-577-3577

Office of Student Financial Aid

313-577-2100

<http://wayne.edu/financial-aid/>

GENERAL INFORMATION

Eugene Applebaum College of Pharmacy and Health Sciences

Office of Student Affairs

259 Mack Avenue, Suite 1600

Detroit, MI 48201

313-577-1716

<http://cphs.wayne.edu/>

cphsinfo@wayne.edu

THE RADIATION THERAPY TECHNOLOGY PROGRAM IS ACCREDITED BY:

Joint Review Committee on Education in Radiologic

Technology 20 N. Wacker Drive—Suite 2850

Chicago, IL 60606-3182

312-704-5300

<http://www.jrcert.org/>

Wayne State University Board of Governors
Kim Trent, *chair*, Bryan C. Barnhill II, Michael Busuito,
Mark Gaffney, Marilyn Kelly, Anil Kumar,
Sandra Hughes O'Brien, Dana Thompson
M. Roy Wilson, *ex officio*

**Attend one of our monthly Information Meetings held the 1st Tuesday of every month.
See <https://cphs.wayne.edu/admissions/before-you-apply.php>**

3/10/2022